

Butterflies native to Sulu Butterfly Sanctuary

Sulu Garden

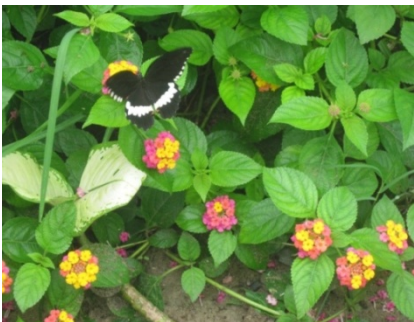
Zulueta Avenue, Miagao, Iloilo 5023 Philippines

Tel. (033)513 9017; 0920 251 3252

Email: info@suluexplorers.com www.suluexplorers.com



Monarch Butterfly (*Danaus plexippus*) "The Monarch is famous for its southward migration and northward return in summer from Canada to Mexico and and Baja California which spans the life of three to four generations of the butterfly."



Female Common Mormon (*Papilio polytes*) "This butterfly is known for the mimicry displayed by the numerous forms of its females which mimic inedible Red-bodied Swallowtails, such as the Common Rose and the Crimson Rose."



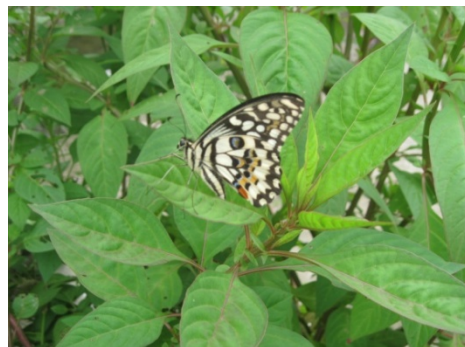
Plain Evening Brown Male
Bletogona mycalesis mycalesis



Psyche (*Leptosia nina*) The flight is weak and erratic and the body of the butterfly bobs up and down as it beats its wings. They fly low over the grass and the butterfly rarely leaves the ground level."



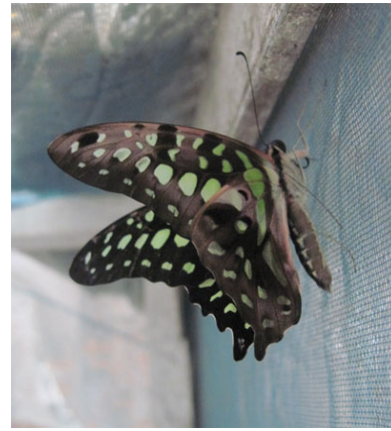
Danaid Eggfly (*Hypolimnas misippus*) "It is well known for polymorphism and mimicry. Males are blackish with distinctive white spots that are fringed in blue. Females are in multiple forms that include male like forms while others appear like the toxic *Danaus chrysippus* and *Danaus plexippus* butterflies. They are found across Africa, Asia, and Australia. "



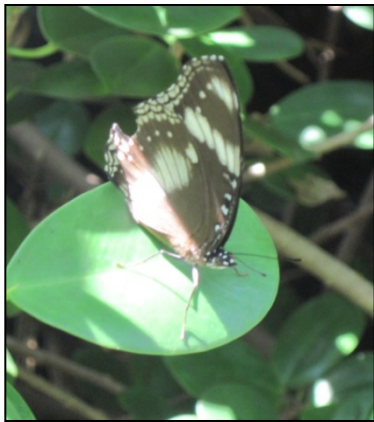
Common lime (*Papilio demoleus*) butterfly is a common and widespread swallowtail butterfly. It gets its name from its host plants which are usually citrus species such as the cultivated lime."



“Pale Green Awlet (*Bibasis gomata*) is a butterfly belonging to the family *Hesperiidae*. It is found in Northeast India, the Western Ghats and parts of Southeast Asia.”



Tailed Jay (*Graphium agamemnon*)
 “Strong and restless fliers, they are very active butterflies and flutter their wings constantly even when at flowers.”



H. bolina is a fairly common butterfly found in lightly wooded country, deciduous forests, thick and moist scrub and the greener parts of human habitation.



Chocolate Albatross, *Appias lyncid* is a butterfly of the Family Pieridae, found in South and South East Asia.



“Lemon Pansy (*Precis lemonias lemonias*). It is a very bold butterfly with strong territorial and aggressive behaviour but not as much as the Peacock Pansy. It flies quickly and strongly but with less fluttering of wings. It generally rests on the ground but not so frequently as the other Pansies and visits damp patches more often than the others of the genus.”



Chocolate pansy. "The wings are orangy brown with several indistinct but darker brown bands traversing from the costa towards the dorsum."